

LAKE ELECTROFISHING DATA COLLECTION SHEET (FALL)
Form 3600A-191

Lake: Fourth MWB Code: 1572000 Date: 09/10/19 County: Oneida Collector(s): Leanna, Woiak, Christopher

Target Fish: Juvenile Walleye Survey Type: CPE Mark Given: None Water Temperature: 66°F Station: Entire Shoreline

Adverse Conditions: None Gear Type: Boomshocker Distance Shocked: 2.8 miles

Volts: 240 Amps: 2.4 Current Type: [X]AC []DC []Pulsed DC Pulse Rate: None Duty Cycle: None

Shocking Start Time: 2000 Shocking End Time: 2309 Generator Start Hour: 0.0 Generator End Hour: 1.3

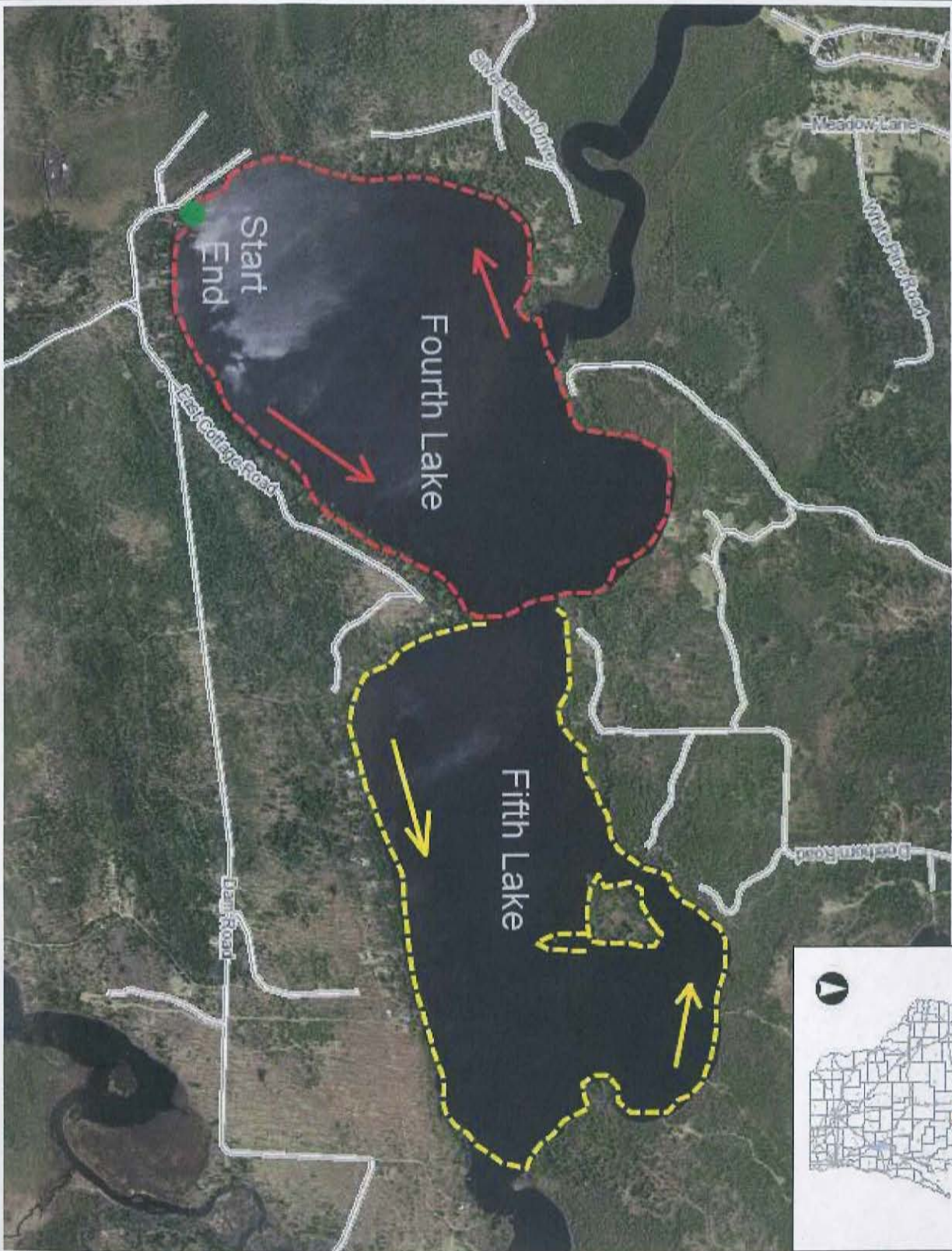
Number of Dippers: []1 [X]2 Entire Shoreline Shocked: [X]Y []N []I Dipnet Mesh Size: 3/8 inch bar H2O Clarity: Stained

Walleye < 12.0"			
Inches	Number	Inches	Number
<3.0		7.5	
3.0		7.6	
3.1		7.7	
3.2		7.8	
3.3		7.9	
3.4		8.0	
3.5		8.1	
3.6		8.2	
3.7		8.3	
3.8		8.4	
3.9		8.5	
4.0		8.6	
4.1		8.7	
4.2		8.8	
4.3		8.9	
4.4		9.0	
4.5		9.1	
4.6		9.2	
4.7		9.3	
4.8		9.4	
4.9		9.5	
5.0		9.6	
5.1		9.7	
5.2		9.8	
5.3		9.9	
5.4		10.0	
5.5		10.1	
5.6		10.2	
5.7		10.3	
5.8		10.4	
5.9		10.5	
6.0		10.6	
6.1		10.7	2
6.2		10.8	
6.3		10.9	2
6.4		11.0	1
6.5		11.1	1
6.6		11.2	
6.7		11.3	
6.8		11.4	
6.9		11.5	
7.0		11.6	
7.1		11.7	
7.2		11.8	
7.3		11.9	
7.4		Total:	6

Inches	Walleye	Northern Pike	Muskellunge	Largemouth Bass	Smallmouth Bass	Inches	Walleye	Northern Pike	Muskellunge
<1.5						24.5-24.9			
1.5-1.9						25.0-25.4			
2.0-2.4						25.5-25.9			
2.5-2.9						26.0-26.4			
3.0-3.4						26.5-26.9			
3.5-3.9						27.0-27.4			
4.0-4.4				1		27.5-27.9			
4.5-4.9						28.0-28.4			
5.0-5.4						28.5-28.9			1
5.5-5.9						29.0-29.4			
6.0-6.4						29.5-29.9			
6.5-6.9						30.0-30.4			
7.0-7.4						30.5-30.9			
7.5-7.9						31.0-31.4			
8.0-8.4						31.5-31.9			
8.5-8.9			1			32.0-32.4			
9.0-9.4						32.5-32.9			
9.5-9.9						33.0-33.4			
10.0-10.4						33.5-33.9			
10.5-10.9						34.0-34.4			
11.0-11.4						34.5-34.9			
11.5-11.9					1	35.0-35.4			
12.0-12.4	1					35.5-35.9			1
12.5-12.9	2					36.0-36.4			1
13.0-13.4	1					36.5-36.9			
13.5-13.9					1	37.0-37.4			
14.0-14.4	1					37.5-37.9			
14.5-14.9	1					38.0-38.4			
15.0-15.4	1					38.5-38.9			
15.5-15.9						39.0-39.4			
16.0-16.4						39.5-39.9			
16.5-16.9						40.0-40.4			
17.0-17.4						40.5-40.9			
17.5-17.9						41.0-41.4			
18.0-18.4					1	41.5-41.9			
18.5-18.9						42.0-42.4			
19.0-19.4						42.5-42.9			
19.5-19.9						43.0-43.4			
20.0-20.4						43.5-43.9			
20.5-20.9						44.0-44.4			
21.0-21.4						44.5-44.9			
21.5-21.9						45.0-45.4			
22.0-22.4						45.5-45.9			
22.5-22.9						46.0-46.9			
23.0-23.4						47.0-47.9			
23.5-23.9						48.0-48.9			
24.0-24.4						49.0-49.9			
Totals:	7	0	4	1	3	50.0+			



Fourth and Fifth Lakes, Oneida County Fall Electrofishing



Legend

- Parking Lot
- Shore Fishing
- Boat Access
- CARRY-IN
- RAMP
- UNKNOWN
- Municipality
- State Boundaries
- County Boundaries
- Major Roads
- Interstate Highway
- State Highway
- US Highway
- County and Local Roads
- County HWY
- Local Road
- Railroads
- Tribal Lands
- Index to EN_Image_Basemap_Leaf_Off

9/10/19
 Leanna
 Woiak
 Christopher

Notes

Start on Fourth Lake. When you reach Fifth, work up fish. Shock Fifth Lake. Work up fish and then finish Fourth Lake.

0.5 0 0.25 0.5 Miles

NAD_1983_HARN_Wisconsin_TM

1 : 15,840

DISCLAIMER: The information shown on these maps has been obtained from various sources, and are of varying age, reliability and resolution. These maps are not intended to be used for navigation, nor are these maps an authoritative source of information about legal land ownership or public access. No warranty, expressed or implied, is made regarding accuracy, applicability for a particular use, completeness, or legality of the information depicted on this map. For more information, see the DNR Legal Notices web page: <http://dnr.wis.gov/legal/>