

# Moen Lake Chain Association

[www.moenlakechain.org](http://www.moenlakechain.org) or  
like us on [Facebook](#)



*Our mission is to protect, maintain and enhance environmental and recreational values of the Moen Lake Chain of lakes and its surroundings; to provide to its members information of concern; to represent its members with other organizations and public officials and to conduct such other activities as are appropriate to the purpose and consistent with the nonprofit status of the Association.*



## Letter from the MLCA President, Nancy Sattler

Greetings! We enjoyed a good winter of ice fishing, skiing, and snowmobiling on our chain but I am ready for sunshine and boating. Piers and lifts are being put in, and boats are getting tuned up. Hang in there everyone... it won't be long before we are waving at each other on boat rides!

With the start of boating season, CBCW boat inspections at the launch will start again. This year we offered a special option when paying your dues. This new option of \$100 ensured your 2022 membership and also sponsored a day of Clean Boat Clean Water workers at the boat launch. We understand that it is sometimes difficult to volunteer when you are here for a short time, so we wanted to offer an opportunity for you to help pay for an employee to work at the launch instead. This person will continue to represent MLCA and the chain, educating boaters and inspecting their watercraft. We want to ensure that our chain stays free of invasive species and remains the pristine waterway for you and your families in the future. I am happy to report that 30 property owners took advantage of this sponsorship. Look for their names on the poster at the boat launch throughout the season and be sure to thank your neighbors for volunteering and/or sponsoring a worker.

The last of the ice went off just one week prior to the annual fishing opener. Our Channel Marker committee was quick to react and get the markers in place on May 5. Please remember that strong currents and boat/buoy incidents will move the markers, so continue to be vigilant when approaching all channels. I have heard that with the two winter wind storms we had, there are many logs and branches floating and partially submerged in the water.

Our friends at Squash Lake put together a handy [document](#) about shoreland permitting, and they are allowing us to post an excerpt from that document in this newsletter. For their full document you can access it on our site [here](#).

I look forward to seeing everyone at our **Annual Meeting on July 9** at 10:30 am, at Twin Pines, 4051 County C.

Thank you,  
Nancy Sattler

## MLCA Photo Contest

Last fall we announced our first-ever MLCA photo contest. We have received 12 entries so far, and we want to remind you that entries can be received by June 30. Winners will be announced at the meeting on July 9. We know you have a lot of great photos from your time on the Moen Chain! Send them to us for the contest, our website and to post on our Facebook page.

When submitting your photo, please be sure to include information about where and when it was taken, and your contact information.

*Deadline is June 30*

Email your photos to:  
[president@moenlakechain.org](mailto:president@moenlakechain.org)



**RENEW your MLCA dues via PayPal on our website!**

## Clean Boats / Clean Waters

Calling on all Moen Lake Chain property owners and interested parties. Just a few hours of your time spent at the landing inspecting watercraft this boating season could be the difference between having our waterways free of invasive species or a chain choked off by weeds or fouled up with Zebra Mussels.

Please consider signing up for a block of 2 hours on a Saturday or Sunday online via [Signup](#). If during the summer you cannot make a date and time you signed up for, please either let me know and/or remove yourself from the [Signup](#). If you need training on what to do I would be happy to work with you too. Mark Marek, 920-213-8838, [mmarek01@gmail.com](mailto:mmarek01@gmail.com)



## Volunteer Opportunities

We will be looking to fill two board positions for the 2022 – 2025 term. Help support the water we all live and play on by volunteering on the MLCA Board! For more information, please reach out to any [current](#) Board member or contact MLCA President Nancy Sattler.

We are also looking for a volunteer who would be willing to put in (spring) and take out (fall) the two rock markers/buoys on Moen Lake. Training and buoy supplies are provided by the MLCA. Anyone interested please call or text Rocky at 248-672-3247.

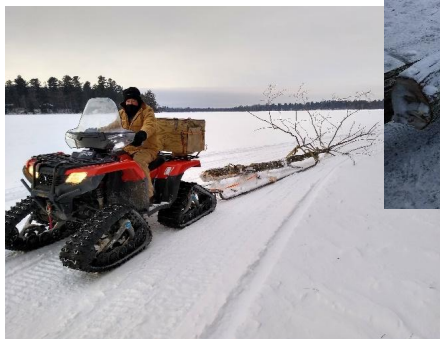
## Merchandise Update



Enjoy the beauty of the northwoods by showing your support of the Moen Lake Chain Association! MLCA merchandise can be delivered directly to your lake area address. Items we currently have on hand include: hoodie sweatshirts (\$28); long and short sleeved tee shirts (\$15-17); boat flags (\$20); and hats (\$17). Sizes and colors vary with some items. Call Keith Kelling at 608-770-0055 to place your order. Additional items will be available at our annual meeting on July 9.

## Fish Stick Fish Habitat Update

At the annual meeting in 2021, the Fish and Habitat Committee gave a short synopsis of our first ever fish stick project. The goal of the project was to provide habitat for fish spawning, which the DNR has identified as one of the reasons for lower fish counts in recent years. By completing the permit process the team was able to place 3 groups of these 'fish sticks' off the island on Fifth Lake. It was a cold winter day when the 9 volunteers gave up their Saturday to bring trees to the island, secure them to permit standards and cable them to shore. This project was headed by Tony Sattler and Bart Tegen. They will be giving more of an update on results and future plans for more projects at our 2022 annual meeting on July 9.



## Shoreland Permitting – Avoid Costly Mistakes

All lakes in Wisconsin have a "buffer zone" extending landward 35 feet from the Ordinary High Water Mark (OHWM) to protect the habitat and prevent runoff into lakes. This buffer is regulated by state statutes, the WI DNR Administrative Rules and County ordinances. The OHWM is not often visible, but it can be thought of as the transition between the gentle slope of the beach and the more steep inland slope. The simplest rule is: Before planning any work along the shore, contact Oneida County Planning and Zoning for complete details on regulations and restrictions.

To read the full document on shoreline permitting guidelines from our friends at Squash Lake, please click [here](#).