

County Oneida	Waters Fifth MWBC: 1571100
Sampling Objective Walleye Recruitment Survey	Number and Locations of Stations (Habitat) Miles Actually Shocked = 3.5 Acres = 240 Total Miles of Shoreline = 4.5 Total Miles of Shockable Shoreline = 3.6
Period Fished (Dates) 09/10/19	Source GPS SWI SWI GPS

**GEAR**

Boomshocker (Hours) 1.5	Time Ö Night Day			
Visual Hours	Time of Day	Haul Seine (Length)	Mesh Size	Area Covered
Angling (Hours)	Time of Day	Trap Net (No. of Net Lifts)	Mesh Size	Depth
Minnow Seine (No. of Hauls)	Area Covered	Gill Net (No. of Feet x No. of Lifts)	Mesh Size	Depth
Other (Hours or Lifts) Boomshocker(s): 1 Dip Netter(s): 2	Mini-boomshocker(s): Dip Netter(s):	Characteristics Walleye Recruitment Code: C-NR		

**FISHING RESULTS**

Species	No.	Modal Size(s)	Size Range	Catch/Unit
Walleye (Age 0+)	0		-	0.00 / hour 0.00 / mile
Hansen Index	NA YOY / acre			
Walleye (Age 1+)	1		10.3	0.67 / hour 0.29 / mile
Walleye (Other)	9		10.5 - 14.9	6.00 / hour 2.57 / mile
Smallmouth Bass	2		13.0 - 15.9	1.33 / hour 0.57 / mile
Largemouth Bass	0		-	0.00 / hour 0.00 / mile
Muskellunge	1		35.0 - 35.4	0.67 / hour 0.29 / mile
Northern Pike	0		-	0.00 / hour 0.00 / mile

**OBSERVATIONS**

Other Species < 3"	Abundance	Size Range	Other Species	Abundance	Size Range
Black Crappie	P				
Bluegill	P				
Pumpkinseed	N				
Rock Bass	N				
Yellow Perch	C				
Minnows	P				

1) Tank Mortality: None      2) Weather: Clear, Calm, & Warm      3) Reliability: High

4) Stocking: 2,380 lg. fing. Walleye (6.6" weighted avg.) - 9/16-17/19

5) Comments: Targeted all size gamefish. Scales interpreted for age assignment. Confetti Index = Poor; relative abundances of small forage above.

Rev. 10-70	Signed (Compiler) Lawrence Eslinger	Date 12/14/19
------------	--	------------------

**LAKE ELECTROFISHING DATA COLLECTION SHEET (FALL)**  
Form 3600A-191

Lake: Fifth MWB Code: 1571100 Date: 09/10/19 County: Oneida Collector(s): Leanna, Woiak, Christopher

Target Fish: Juvenile Walleye Survey Type: CPE Mark Given: None Water Temperature: 66°F Station: Entire Shoreline

Adverse Conditions: None Gear Type: Boomshocker Distance Shocked: 3.5 miles

Volts: 240 Amps: 2.8 Current Type: [X]AC [ ]DC [ ]Pulsed DC Pulse Rate: None Duty Cycle: None

Shocking Start Time: 2040 Shocking End Time: 2210 Generator Start Hour: 0.0 Generator End Hour: 1.5

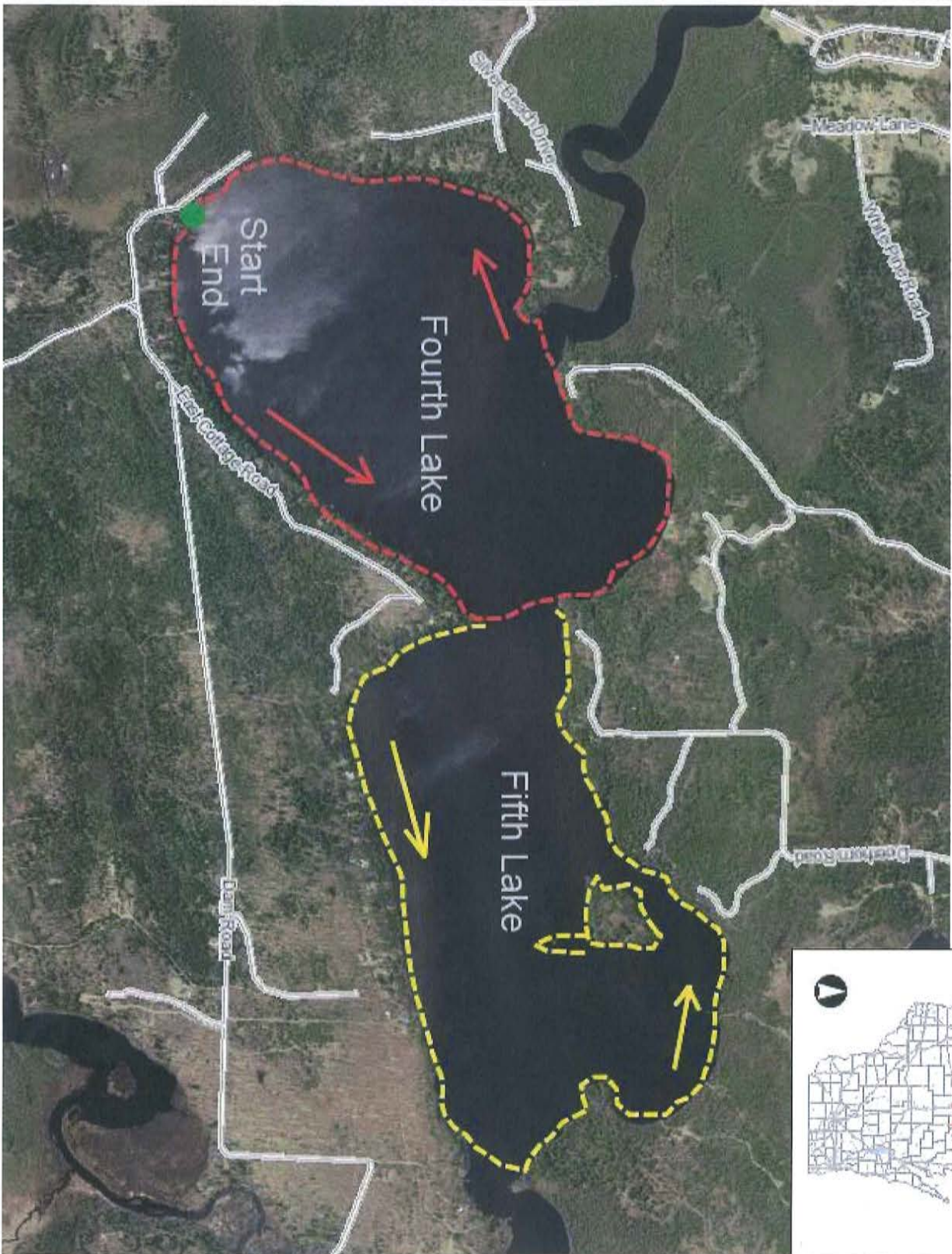
Number of Dippers: [ ]1 [X]2 Entire Shoreline Shocked: [X]Y [ ]N [ ]I Dipnet Mesh Size: 3/8 inch bar H2O Clarity: Stained

Walleye < 12.0"			
Inches	Number	Inches	Number
<3.0		7.5	
3.0		7.6	
3.1		7.7	
3.2		7.8	
3.3		7.9	
3.4		8.0	
3.5		8.1	
3.6		8.2	
3.7		8.3	
3.8		8.4	
3.9		8.5	
4.0		8.6	
4.1		8.7	
4.2		8.8	
4.3		8.9	
4.4		9.0	
4.5		9.1	
4.6		9.2	
4.7		9.3	
4.8		9.4	
4.9		9.5	
5.0		9.6	
5.1		9.7	
5.2		9.8	
5.3		9.9	
5.4		10.0	
5.5		10.1	
5.6		10.2	
5.7		10.3	1
5.8		10.4	
5.9		10.5	1
6.0		10.6	
6.1		10.7	
6.2		10.8	
6.3		10.9	
6.4		11.0	
6.5		11.1	1
6.6		11.2	
6.7		11.3	1
6.8		11.4	1
6.9		11.5	
7.0		11.6	1
7.1		11.7	
7.2		11.8	
7.3		11.9	
7.4		<b>Total:</b>	6

Inches	Walleye	Northern Pike	Muskellunge	Largemouth Bass	Smallmouth Bass	Inches	Walleye	Northern Pike	Muskellunge
<1.5						24.5-24.9			
1.5-1.9						25.0-25.4			
2.0-2.4						25.5-25.9			
2.5-2.9						26.0-26.4			
3.0-3.4						26.5-26.9			
3.5-3.9						27.0-27.4			
4.0-4.4						27.5-27.9			
4.5-4.9						28.0-28.4			
5.0-5.4						28.5-28.9			
5.5-5.9						29.0-29.4			
6.0-6.4						29.5-29.9			
6.5-6.9						30.0-30.4			
7.0-7.4						30.5-30.9			
7.5-7.9						31.0-31.4			
8.0-8.4						31.5-31.9			
8.5-8.9						32.0-32.4			
9.0-9.4						32.5-32.9			
9.5-9.9						33.0-33.4			
10.0-10.4						33.5-33.9			
10.5-10.9						34.0-34.4			
11.0-11.4						34.5-34.9			
11.5-11.9						35.0-35.4			1
12.0-12.4	1					35.5-35.9			
12.5-12.9						36.0-36.4			
13.0-13.4	1				1	36.5-36.9			
13.5-13.9						37.0-37.4			
14.0-14.4						37.5-37.9			
14.5-14.9	2					38.0-38.4			
15.0-15.4						38.5-38.9			
15.5-15.9					1	39.0-39.4			
16.0-16.4						39.5-39.9			
16.5-16.9						40.0-40.4			
17.0-17.4						40.5-40.9			
17.5-17.9						41.0-41.4			
18.0-18.4						41.5-41.9			
18.5-18.9						42.0-42.4			
19.0-19.4						42.5-42.9			
19.5-19.9						43.0-43.4			
20.0-20.4						43.5-43.9			
20.5-20.9						44.0-44.4			
21.0-21.4						44.5-44.9			
21.5-21.9						45.0-45.4			
22.0-22.4						45.5-45.9			
22.5-22.9						46.0-46.9			
23.0-23.4						47.0-47.9			
23.5-23.9						48.0-48.9			
24.0-24.4						49.0-49.9			
<b>Totals:</b>	4	0	1	0	2	50.0+			



# Fourth and Fifth Lakes, Oneida County Fall Electrofishing



0.5 0 0.25 0.5 Miles  
NAD\_1983\_HARN\_Wisconsin\_TM  
1: 15,840

DISCLAIMER: The information shown on these maps has been obtained from various sources, and is of varying age, reliability and resolution. These maps are not intended to be used for navigation, nor are these maps an authoritative source of information about legal land ownership or public access. No warranty, expressed or implied, is made regarding accuracy, applicability for a particular use, completeness, or legality of the information depicted on this map. For more information, see the DNR Legal Notices web page: <http://dnr.wi.gov/legal/>

- ### Legend
- Parking Lot
  - Shore Fishing
  - Boat Access
  - CARRY-IN
  - RAMP
  - UNKNOWN
  - Municipality
  - State Boundaries
  - County Boundaries
  - Major Roads
  - Interstate Highway
  - State Highway
  - US Highway
  - County and Local Roads
  - County HWY
  - Local Road
  - Railroads
  - Tribal Lands
  - Index to EN\_Image\_Basemap\_Leaf Off

*9/10/19  
Leanna  
Woiak  
Christopher*

### Notes

Start on Fourth Lake. When you reach Fifth, work up fish. Snook Fifth Lake. Work up fish and then finish Fourth Lake.